

700 / 800-Series

Rotary Switches

The 700 and 800-Series are single pole multi-position, general purpose rotary switches. These switches feature a nylon actuator in a metal clad construction along with a self-cleaning silver plated contact design. The 700 and 800-Series are typically used in applications requiring multi-position speed controls, such as electric fans.



Carling Technologies®

Innovative Designs. Powerful Solutions.

Innovative Designs. Powerful Solutions.

Carling Technologies, Inc.
60 Johnson Avenue • Plainville, CT 06062-1177
Phone: (860) 793-9281 • Fax: (860) 793-9231
Email: sales@carlingtech.com • www.carlingtech.com

Dielectric Strength

UL/CSA: 1000V (minimum)

Base Material

Steel/Zinc Plate

Insulation Resistance

100 Megohms (minimum)

Actuator Material

Brass/Nickel Plate

700-1A - BL

¹
Base Part Number

²
Knob Color

1 BASE PART NUMBER: SERIES/POLES/CIRCUITRY¹/RATING/TERMINATION²

2A 250VAC; 4A 125VAC; 1A 125V

Solder Lugs	250 Tabs	Position 1	Position 2	Position 3	Position 4	
-	700-A	OFF	ON	ON	ON	
700-1	700-1A	OFF	ON	-	-	
700-2	700-2A	OFF	ON	ON	ON	repeating 8 positions
700-3	700-3A	OFF	ON	ON	OFF	
700-4	700-4A	OFF	ON	ON	-	
700-5	700-5A	OFF	ON	OFF	-	
700-6	700-6A	-	ON	OFF	ON	
700-7	700-7A	-	ON	ON	-	
700-8	700-8A	-	ON	ON	ON	
700-9	700-9A	OFF	ON	OFF	ON	

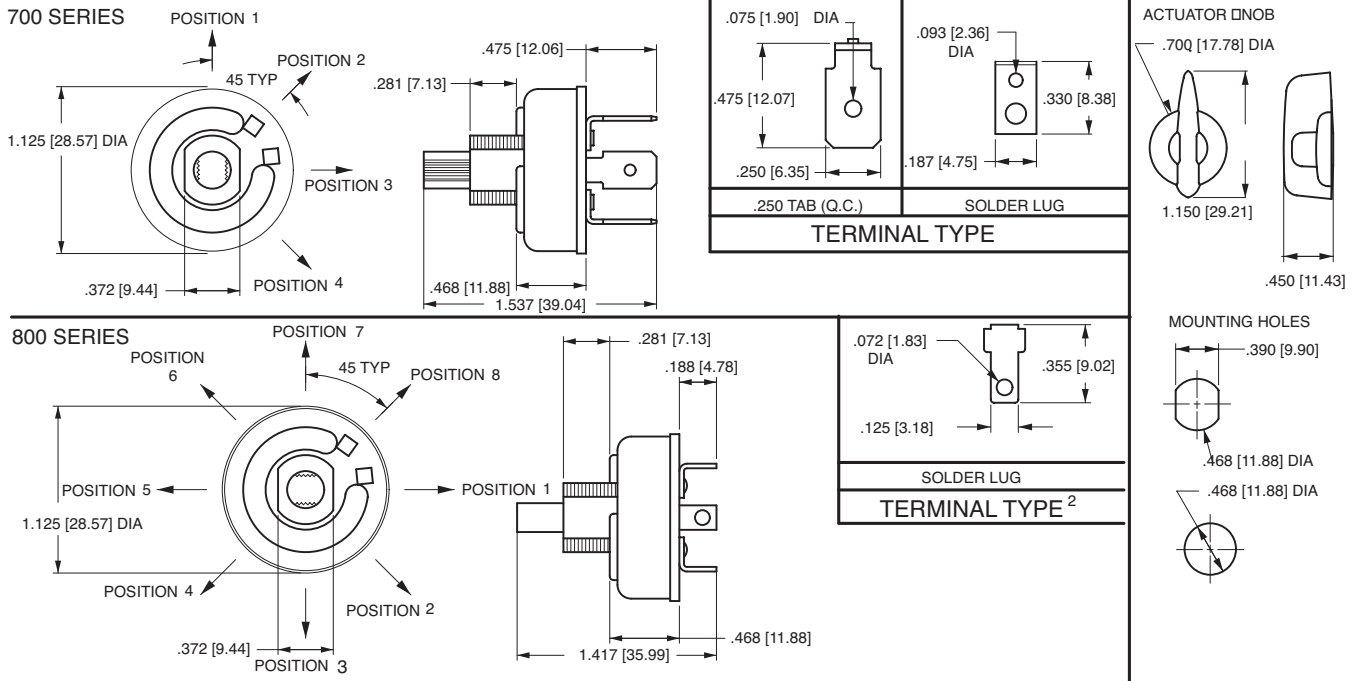
3A 250VAC; 6A 125VAC

Switch Positions	OFF Position	
800-2	800-A	1st position
800-3	800-A2	2nd position
800-4	800-A3	3rd position
800-5	800-A4	4th position
800-6	800-A5	5th position
800-7	800-A6	6th position
800-8	800-A7	7th position
	800-A8	8th position

2 ACTUATOR COLOR
BL Black

Notes:

- 700-2 and 700-2A feature 8 detent positions.
- 800-Series terminal is a combination solder lug and quick connect.



*Manufacturer reserves the right to change product specification without prior notice.