

LP-Series

Illuminated Indicators

The LP-Series Illuminated Indicators are the perfect complement to the aesthetics, reliability and performance of our L-Series rocker switches. As a critical safety feature, the illumination alerts the operator of essential system functions or malfunctions, such as: Oil Pressure, High Temperature, Transmission or other fluid levels, Parking Brake or General System confirmations. The L-Series styling assures seamless integration into most any dashboard panel to meet the needs of today's Off Highway, Heavy Vehicle, Marine, Appliance and Industrial Control markets.



Carling Technologies®

Innovative Designs. Powerful Solutions.

Innovative Designs. Powerful Solutions.

Carling Technologies, Inc.
60 Johnson Avenue • Plainville, CT 06062-1177
Phone: (860) 793-9281 • Fax: (860) 793-9231
Email: sales@carlingtech.com • www.carlingtech.com

Electrical

Terminals	Brass or copper/silver plate 3/16" (4.76mm) & 1/4" (6.3mm) Quick Connect terminations standard.
Lighted	Incandescent - rated 10,000 hours LED - rated 100,000 hours 1/2 life (LED is internally ballasted for voltages to 24VDC)

Physical

Seals	Insert, base & bracket are sealed.
Base	Nylon 66 GF rated to 85°C with a flammability rating of 94VO.
Insert	Polycarbonate rated at 100°C.
Connector	Nylon 66 rated at 85°C. Polarized
Markings	Over 1000 pad printed or laser etched legends available
Bracket	Nylon 66 GF rated to 85°C

Environmental

Environmental	IP67, representing an index of protection as applied to electrical equipment in accordance with IEC 529, BS 5490, DIN 400 50 & NFC 20 010.
Corrosion Resistance	Mixed Flowing Gas MFG Class III per ASTM B-827 & B-845, Method H, with 3 years exposure.
Operating Temperature	-40°C to +85°C
Vibration 1	Per Mil-Std 202F, Method 204D Test Condition A 0.06 DA or 10G's 10- 500 Hz. Tested with VCH connector. Test criteria - No loss of circuit during test and pre and post test contact resistance.
Vibration 2	Resonance search 24-50 Hz 0.40 DA 50-2000 ±10 G's peak Results Horizontal Axis 3-5 G's max. Random 24 Hz 0.06 PSD-Gsq/Hz 60 Hz 0.50 100 Hz 0.50 200 Hz 0.025 2000 Hz 0.025 No loss of circuit during test; <10µ chatter.
Shock	Per Mil-Std 202F, Method 213B, Test Condition K @ 30G's. Tested with VCH connector. Test criteria - No loss of circuit during test, pre, and post test contact resistance.
Salt Spray	Per Mil-Std 202F, Method 101D, Test Condition A, 48 Hrs.
Thermal Shock	Per Mil-Std 202F, Method 107F, Test Condition A, -55°C to 85°C. Test criteria - pre and post test contact resistance.
Moisture Resistance	Per Mil-Std 202F, Method 106F, Test Criteria - pre and post test contact resistance.

*Manufacturer reserves the right to change product specification without prior notice.

LP 1 H R R 5 - 9 A A - Y2 1 DU

1 Series 2 Termination 3 Illumination 4 Lamp 5 Lamp 6 Bracket Color 7 Insert Color 8 Style 9 Style 10 Legend 1 11 Legend Orientation 12 Legend 2

1 SERIES

LP L-Series Illumination Plug

2 TERMINATION³

1 .250 (8.35) x .032 (0.51) Quick Connect
2 .187 (4.75) x .032 (0.51) Quick Connect

3 ILLUMINATION

LAMPS	ILLUMINATION	LAMP WIRED TO TERMINALS
A 1	—	10 (+) 8 (-)
B 1	—	10 (+) 8 (-)
2	—	12 (+) 11 (-)
C 1	—	10 (+) 8 (-)
2	—	12 (+) 8 (-)
E 1 & 2	Parallel	10 (+) 8 (-)
H 1 & 2	Series	10 (+) 8 (-)

LAMP 1 LOCATED ABOVE TERMINALS 9 & 10 END OF BRACKET.
 LAMP 2 LOCATED ABOVE TERMINALS 11 & 12 END OF BRACKET.
 POSITIVE (+) AND NEGATIVE (-) SYMBOLS APPLY TO LED LAMPS ONLY.

4,5 LAMP (same coding for both selections)²

Selection 4: specifies lamp 1 located above terminals 10 (+) & 9 (-).
 Selection 5: specifies lamp 2 located above terminals 12 (+) & 11 (-).

No lamp	0 (position 5 only)	4 3V	5 6V	6 12V	7 18V	8 24V
Incandescent	Amber	Green	Red			
LED	L	F	R			
2VDC	M	G	S			
6VDC	N	H	T			
12VDC	P	J	V			
24VDC						

6 BRACKET COLOR

5 Black

7 INSERT COLOR^{1,2}

9 Painted Black - Laser Etch
A Clear (Transparent)
B White (Translucent)
C Red (Translucent)
D Amber (Translucent)
E Green (Translucent)
F Blue (Translucent)

8, 9 STYLE (same coding for both selections)

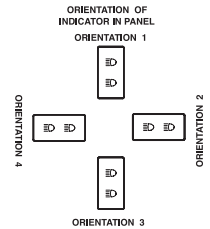
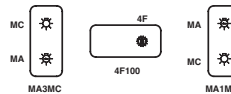
Z Not Painted (used with INSERT COLORS A-F)
5 Clear Laser Etch Background Color (used with INSERT COLOR 9)
A White Laser Etch Background Color (used with INSERT COLOR 9)

10 LEGEND OVER LAMP¹

00 No legend
 — Laser Etched or Body Legends
 For legend options, visit us at carlingtech.com

11 LEGEND ORIENTATION

0 No legend
1 Orientation 1
2 Orientation 2
3 Orientation 3
4 Orientation 4

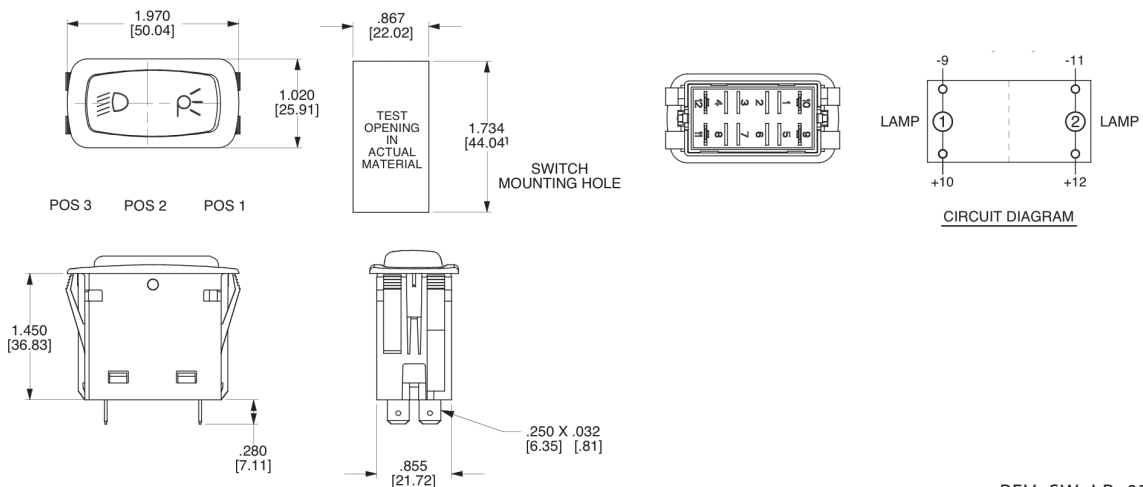


12 LEGEND OVER LAMP²

00 No legend
 — Laser Etched or Body Legends
 For legend options, visit us at carlingtech.com

Notes:

- To order separately, specify LPC and selection 7 code. Ex LPC-9
- For LEDs, insert color must be clear, white or match color of LED.
- For connector, specify part number LC2-01 (.187 tabs), LC3-01 (.250 tabs).



REV_SW_LP_0712